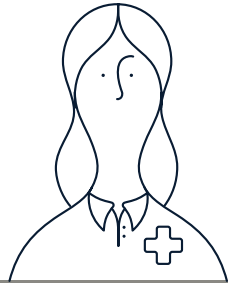




# WHO'S ELIGIBLE TO JOIN?

**Membership of PPS Mutual is strictly limited to a defined group of Australian professionals.**

To join PPS Mutual your client will need to be an Australian citizen or a permanent resident of Australia or a New Zealander with special category visa and be eligible to practise in one of the designated professions shown here or be previous member of PPS in South Africa.



## MEDICAL

### **Audiologist**

An Audiology Australia Accredited Audiologist

### **Chinese Medicine Practitioner**

Registered with the Chinese Medicine Practitioners Board of Australia

### **Chiropractor**

Registered with the Chiropractic Board of Australia

### **Dentist, Dental Specialist**

Registered with the Dental Board of Australia as a Dentist or Dental Specialist

### **Doctor, GP or Specialist**

Registered with the Medical Practitioners Board in any Australian State or Territory

### **Medical Radiation Practitioner**

Registered with the Medical Radiation Practice Board of Australia

### **Occupational Therapist**

Registered with the Occupational Therapy Board of Australia

### **Optometrist**

General registration with the Optometry Board of Australia

### **Osteopath**

Registered with the Osteopathy Board of Australia

### **Pharmacist**

Registered with the Pharmacy Board of Australia

### **Podiatrist**

Registered with the Podiatry Board of Australia

### **Psychologist**

General registration with the Psychology Board of Australia

### **Physiotherapist**

Registered with the Physiotherapists Registration Board

### **Speech Pathologist**

A Certified Practising Member of Speech Pathology Australia

### **Veterinarian**

Registered to practise with the Veterinary Registration Board in any Australian State or Territory



## INDUSTRIAL

### **Architect**

Registered with the Architects Board in any State or Territory of Australia

### **Engineer**

Current or Prior Accreditation as an Engineering Technologist or Professional Engineer of Engineers Australia, Board of Professional Engineers of Queensland or Professionals Australia or a Member/ Fellow of the Australian Institute of Mining and Metallurgy

### **Quantity Surveyor**

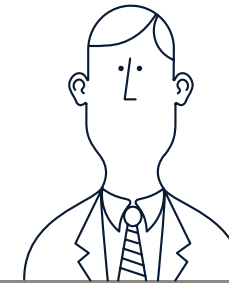
Member or Fellow of the Australian Institute of Quantity Surveyors

### **Surveyors**

Registered or licensed with the Surveyors Board in any Australian State or Territory

### **Town Planner**

A Full Member or Registered Planner of the Planning Institute of Australia



## COMMERCIAL & LEGAL

### **Accountant**

Current or Prior Member of Chartered Accountants Australia and New Zealand, CPA Australia or Institute of Public Accountants

### **Actuary**

Associate Actuary or Fellow of the Institute of Actuaries of Australia

### **Barrister, Solicitor, Judge**

Admitted to practice by the Supreme Court of an Australian State or Territory

### **Chartered Financial Analyst Charterholders**

Registered as a Chartered Financial Analyst Charterholder